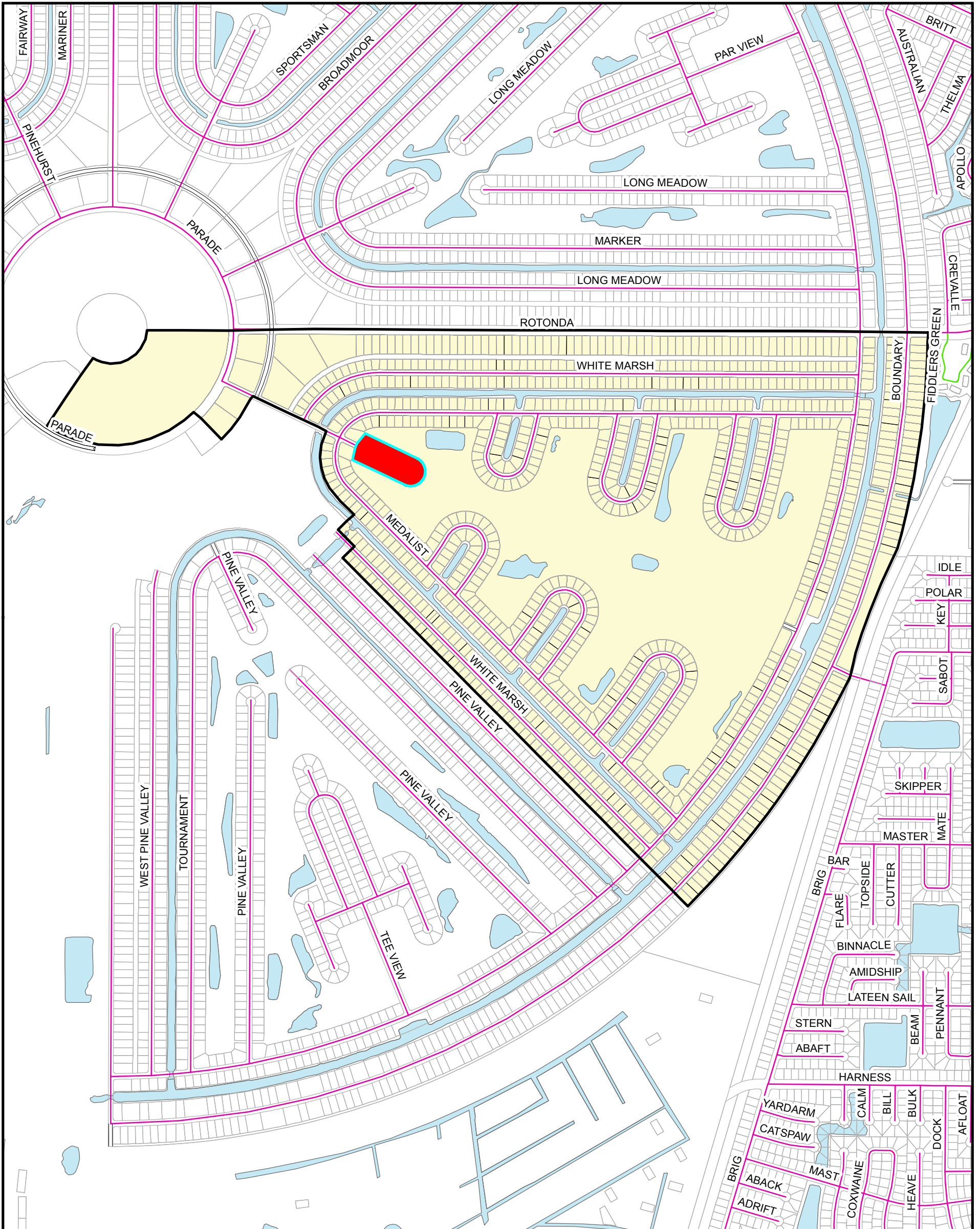
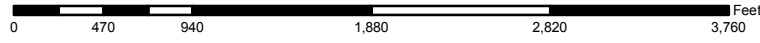
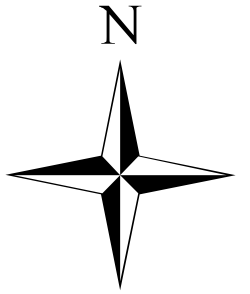






# ROTONDA WHITE MARSH STREET & DRAINAGE UNIT



-  Rotonda White Marsh Boundary
-  First Time Assessed

This map is a representation of compiled public information. It is believed to be an accurate and true depiction for the stated purpose, but Charlotte County and its employees make no guaranties, implied or otherwise, to the accuracy, or completeness. We therefore do not accept any responsibilities as to its use. This is not a survey or is it to be used for design. Reflected dimensions are for informational purposes only and may have been rounded to the nearest tenth. For precise dimensions, please refer to recorded plats and related documents.

© Copyright 2011 Port Charlotte, FL by Charlotte County  
Prepared April 25, 2011 by C. Broughman