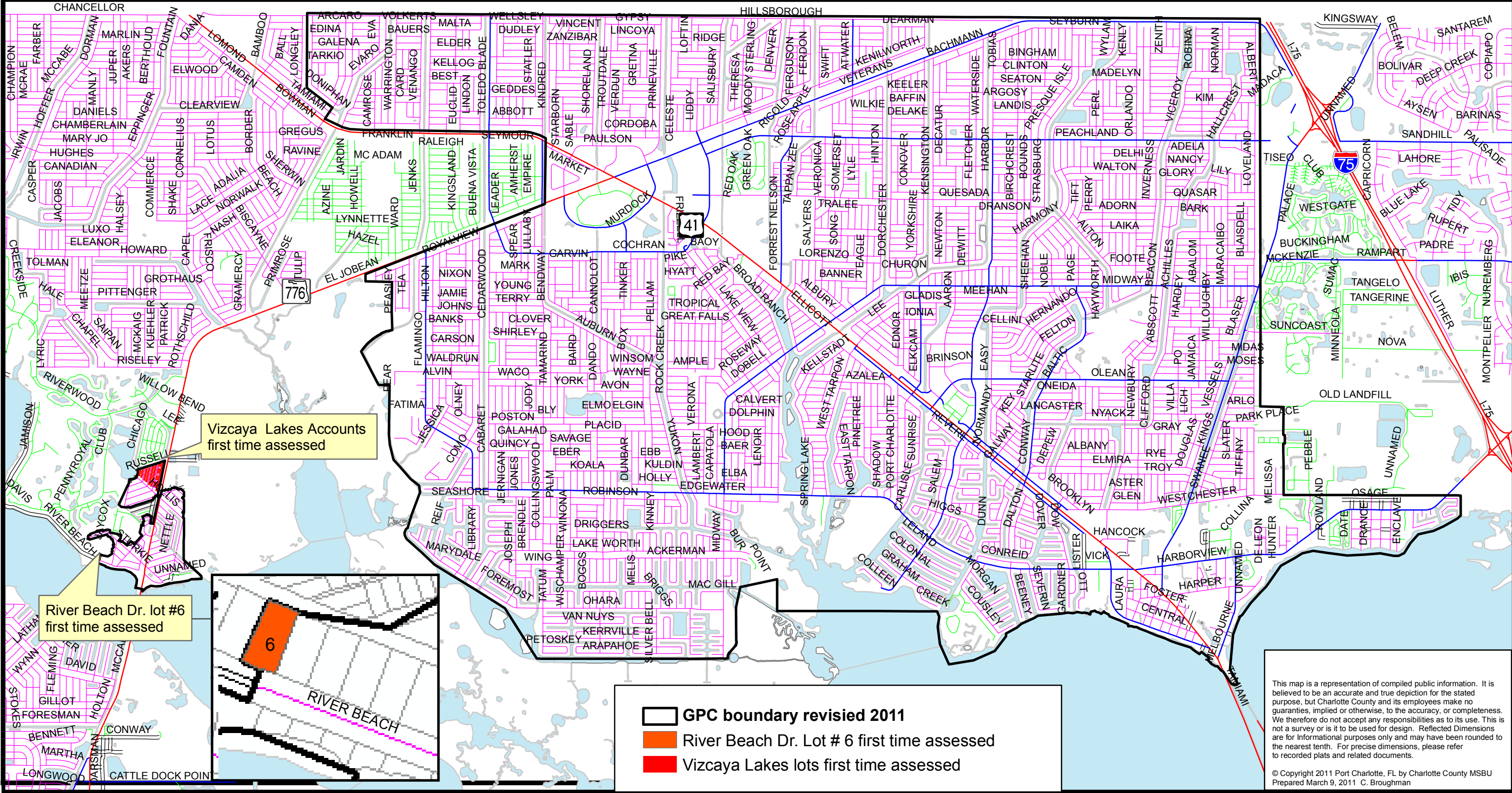
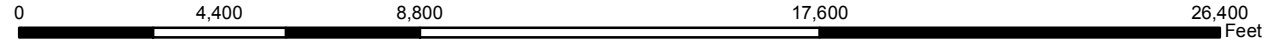
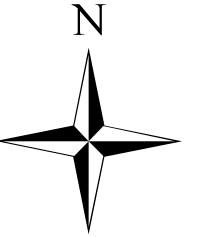


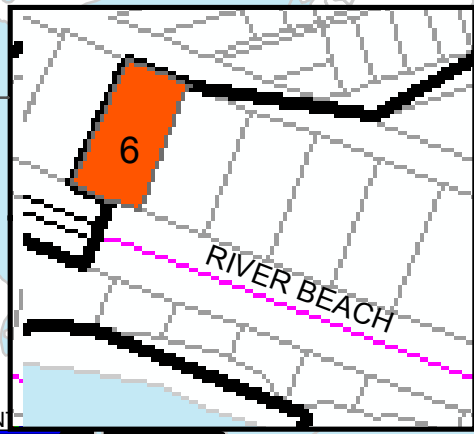


Greater Port Charlotte Street & Drainage



Vizcaya Lakes Accounts first time assessed

River Beach Dr. lot #6 first time assessed



- GPC boundary revised 2011
- River Beach Dr. Lot # 6 first time assessed
- Vizcaya Lakes lots first time assessed

This map is a representation of compiled public information. It is believed to be an accurate and true depiction for the stated purpose, but Charlotte County and its employees make no warranties, implied or otherwise, to the accuracy, or completeness. We therefore do not accept any responsibilities as to its use. This is not a survey or is it to be used for design. Reflected Dimensions are for informational purposes only and may have been rounded to the nearest tenth. For precise dimensions, please refer to recorded plats and related documents.

© Copyright 2011 Port Charlotte, FL by Charlotte County MSBU
Prepared March 9, 2011 C. Broughman